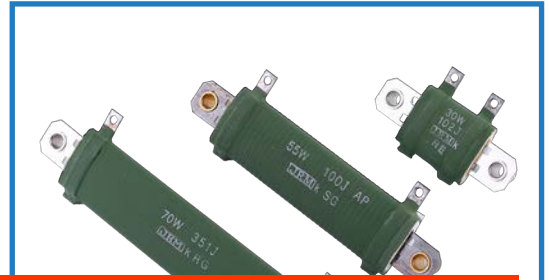


不燃性巻線固定抵抗器
Non Flammable Wire-Wound Fixed Resistor

ZGA series



こちらをクリック / Click here

デジタルカタログにてご覧ください
Please see the digital brochure.

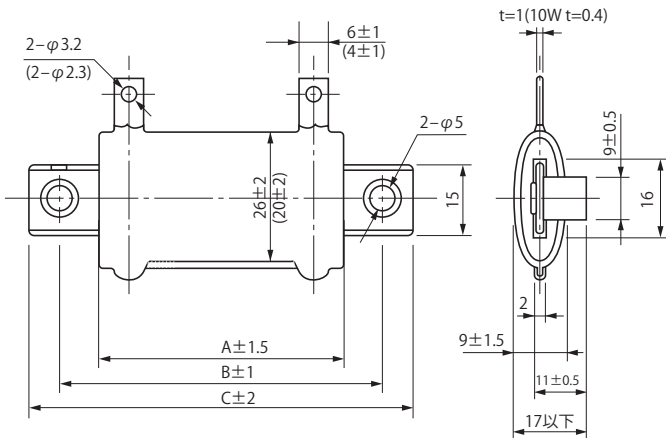
抵抗温度特性 Temperature coefficient	±200ppm/°C max. (常温 Normal temp. ~ 常温 Normal temp.+ 100°C)	
定格負荷 Power rating load	△R/R ≤ ± (1%+0.05Ω) 最高表面温度 (Max. surface temp. rise) 350°C max.	
短時間過負荷 Short-time overload	アーク焼損等の異常なきこと No evidence of arc damage etc. △R/R ≤ ± (2%+0.05Ω)	定格電力×10倍 5秒間負荷 1000% of rated power load for 5 seconds 但し、端子間最高許容電圧を超えないこと However, do not exceed the max. tolerance of voltage between terminals.
絶縁抵抗 Insulation resistance	100MΩ min.	DC500V
耐電圧 Dielectric withstanding voltage	機械的損傷及び絶縁破壊なきこと No evidence of mechanical damage or insulation breakdown	AC2000V for one minute
端子強度 Terminal strength	機械的損傷なきこと No evidence of mechanical damage	引張り(Pull) 44N for 30 seconds
抵抗体強度 Resistor strength	機械的損傷なきこと No evidence of mechanical damage	98N for 30 seconds
耐振性 Vibration	機械的損傷なきこと No evidence of mechanical damage	1.5mm 10~55Hz / one minute X, Y and Z each direction for 2 hours
半田付け性 Solderability	75%以上新しい半田で覆われること 75% coverage min. with new solder	270°C for 5 seconds

■耐候的特性 Environmental characteristics

特性 Characteristics	規格値 Standards	試験方法 Test methods
耐熱性 Thermal resistance	標印、絶縁被覆に著しい損傷なきこと No deterioration of protective coatings or markings	350°C for 2 hours
熱衝撃 Thermal shock	機械的損傷なきこと No evidence of mechanical damage △R/R ≤ ± (2%+0.05Ω)	定格負荷30分間 → -55°C 15分間 power rating load for 30 minutes → -55°C for 15 minutes
耐湿性 Humidity	標印、絶縁被覆に異常なきこと No deterioration of protective coatings or markings △R/R ≤ ± (2%+0.05Ω) 絶縁抵抗 Insulation resistance 10MΩ min.	成極DC100V Voltage DC100V 40°C 95%RH for 500 hours
耐久性 (耐湿負荷) Durability (Moisture resistance)	標印、絶縁被覆に異常なきこと No deterioration of protective coatings or markings △R/R ≤ ± (3%+0.05Ω)	10%負荷 10% of rated power load 90 minutes ON and 30 minutes OFF 40°C 95%RH for 500 hours
耐久性 (定格負荷) Durability (Nominal load)	標印、絶縁被覆に異常なきこと No deterioration of protective coatings or markings △R/R ≤ ± (5%+0.05Ω)	100%負荷 100% of rated power load 90 minutes ON and 30 minutes OFF for 500 hours
難燃性 (過負荷) Flame resistance (Over load)	燃焼しないこと No evidence of flaming or arcing	定格電力の1~6倍 100~600% of rated power load

■規格 Standards

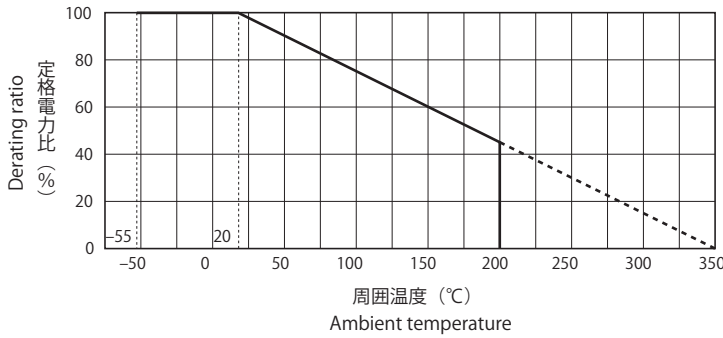
●形状・寸法 Configuration (mm)



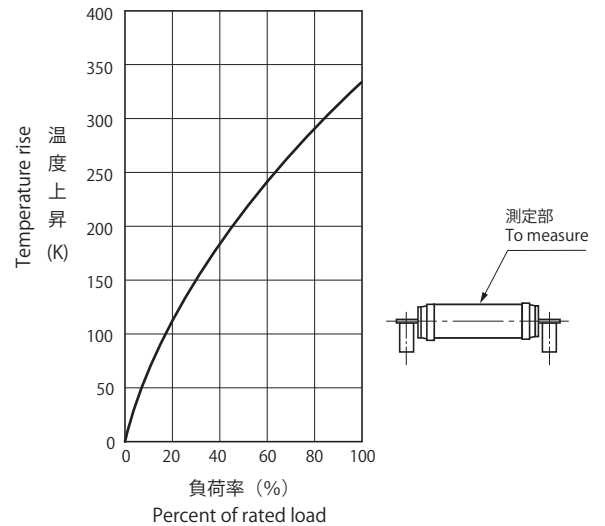
10Wは取付足がありません
There are no attached stands for 10W resistors
() は10Wの寸法
() is for 10W

形状 Type	寸法 Dimensions (mm)			抵抗値範囲 (Ω) Resistance Range
	A	B	C	
ZGA 10W	30	—	—	Standard 0.2~ 3k
30W	32	51	64	0.3~ 5k
40W	51	70	83	0.5~10k
55W	89	108	120	1.0~30k
70W	120	140	152	2.0~50k
95W	152	171	184	3.0~80k

●定格電力軽減曲線 Power Derating Curve



●表面温度上昇 Surface Temperature Rise



■標準抵抗値

Standard resistance values 1 · 2 · 3 · 5 + JIS-E24 series

■抵抗値許容差

Resistance tolerance $R \geq 1\Omega$ ----- $\pm 5\%$ (J)
 $R < 1\Omega$ ----- $\pm 10\%$ (K)

■受注生産品 Products by order

■品番コード Explanation of Part Number

ZGA 95W 102 J / RO

