

不燃性角形巻線固定抵抗器

Non Flammable Square Wire-Wound

Fixed Resistor

SQH series



こちらをクリック / Click here

デジタルカタログにてご覧ください

Please see the digital brochure.

抵抗温度特性 Temperature coefficient	20Ω ≤ ±260ppm/°C max. (常温 Normal temp. ~ 常温 Normal temp.+ 100°C) 20Ω > ±400ppm/°C max. (常温 Normal temp. ~ 常温 Normal temp.+ 100°C)	
定格負荷 Power rating load	△R/R ≤ ± (1%+0.05Ω) 最高表面温度 (Max. surface temp. rise) 275°C or 315°C max.	
短時間過負荷 Short-time overload	アーク焼損等の異常なきこと No evidence of arc damage etc. △R/R ≤ ± (2%+0.05Ω)	定格電力×10倍 5秒間負荷 1000% of rated power load for 5 seconds
絶縁抵抗 Insulation resistance	20MΩ min.	DC500V
耐電圧 Dielectric withstanding voltage	機械的損傷及び絶縁破壊なきこと No evidence of mechanical damage or insulation breakdown	AC1500V for one minute
端子強度 Terminal strength	機械的損傷なきこと No evidence of mechanical damage	引張り(Pull) 44N for 30 seconds
抵抗体強度 Resistor strength	機械的損傷なきこと No evidence of mechanical damage	20W~40W 98N for 10 seconds
耐振性 Vibration	機械的損傷なきこと No evidence of mechanical damage	1.5mm 10~55Hz / one minute X, Y and Z each direction for 2 hours
半田付け性 Solderability	75%以上新しい半田で覆われること 75% coverage min. with new solder	250°C for 3 seconds

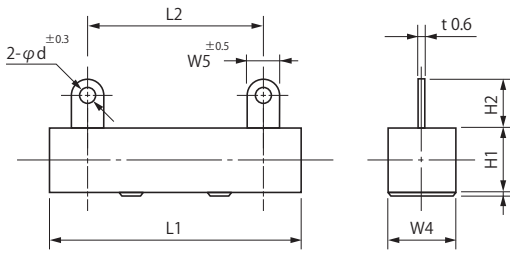
■ 耐候的特性 Environmental characteristics

特性 Characteristics	規格値 Standards	試験方法 Test methods
耐熱性 Heat resistance	標印、絶縁被覆に著しい損傷なきこと No deterioration of protective coatings or markings	275°C or 315°C for 2 hours
熱衝撃 Thermal shock	機械的損傷なきこと No evidence of mechanical damage △R/R ≤ ± (2%+0.05Ω)	定格負荷30分間 → -30°C 15分間 Power rating load for 30 minutes → -30°C for 15 minutes
耐湿性 (定常状態) Humidity (Steady state)	標印、絶縁被覆に異常なきこと No deterioration of protective coatings or markings △R/R ≤ ± (3%+0.05Ω) 絶縁抵抗 (Insulation resistance) 2.5MΩ min	成極DC100V 40°C 95%RH for 1000 hours
耐久性 (耐湿負荷) Durability (Moisture resistance)	標印、絶縁被覆に異常なきこと No deterioration of protective coatings or markings △R/R ≤ ± (3%+0.05Ω)	10%負荷 10% of rated power load 90 minutes ON and 30 minutes OFF 40°C 95%RH for 500 hours
耐久性 (定格負荷) Durability (Nominal load)	標印、絶縁被覆に異常なきこと No deterioration of protective coatings or markings △R/R ≤ ± (5%+0.05Ω)	100%負荷 100% of rated power load 90 minutes ON and 30 minutes OFF for 500 hours
難燃性 (過負荷) Flame resistance (Over load)	燃焼しないこと No evidence of flaming or arcing	定格電力の1~2倍 100~200% of rated power load

■規格 Standards

●形状・寸法 Configuration (mm)

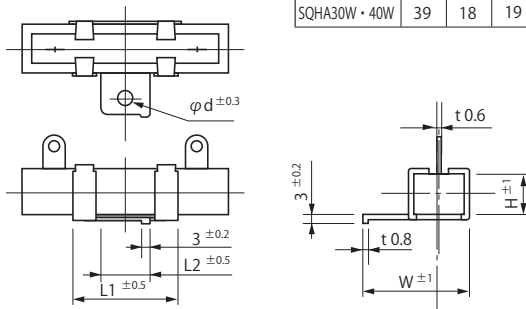
●SQH type



形状 Type	定格電力 (W) Power Rating	寸法 Dimensions (mm)							抵抗値範囲 (Ω) Resistance Range
		L1	L2±2	H1	H2	W4	W5±1	φ d	
SQH 20W	20	60.0	44.0	13.5	9.0	14.5	7.0	3.2	1~3.9k
30W	30	75.0	52.0	19.0	12.0	19.0	7.0	4.3	1~5.6k
40W	40	90.0	67.0	19.0	12.0	19.0	7.0	4.3	1.2~8.2k

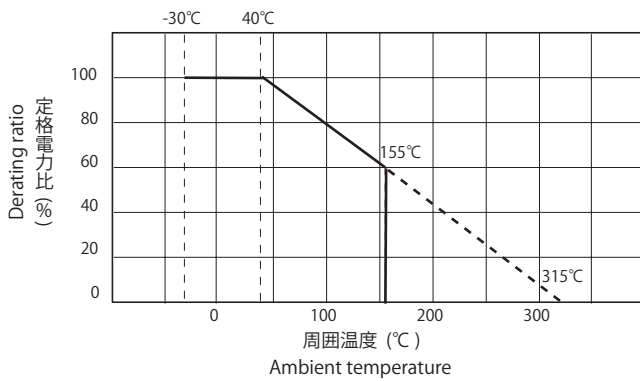
※一般公差は±1.0
General Tolerance ±1.0

●SQHA type

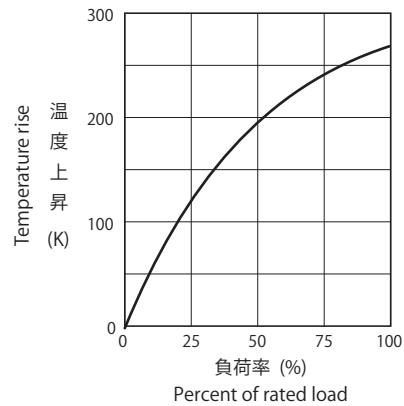


形状 Type	寸法 Dimensions (mm)				
	L1	L2	H	W	φ d
SQHA30W・40W	39	18	19	37	4.7

●定格電力軽減曲線 Power Derating Curve



●表面温度上昇 Surface Temperature Rise



■標準抵抗値

Standard resistance values JIS-E24 series

■抵抗値許容差

Resistance tolerance $R \geq 1\Omega \dots \pm 5\%$ (J)

$R < 1\Omega \dots \pm 10\%$ (K)

■受注生産品 Products by order

■品番コード Explanation of Part Number

