

不燃性巻線固定抵抗器  
Non Flammable Wire-Wound Fixed Resistor

**KNY** series



**こちらをクリック / Click here**

**デジタルカタログにてご覧ください  
Please see the digital brochure.**

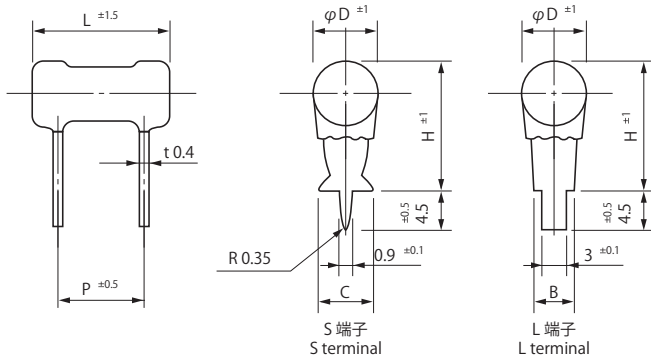
抵抗温度特性 Temperature coefficient	20Ω ≤ ±260ppm/°C max. (常温 Normal temp. ~ 常温 Normal temp.+ 100°C) 20Ω > ±400ppm/°C max. (常温 Normal temp. ~ 常温 Normal temp.+ 100°C)	
定格負荷 Power rating load	ΔR/R ≤ ± (1%+0.05Ω) 最高表面温度 (Max. surface temp. rise) 350°C max.	
短時間過負荷 Short-time overload	アーク焼損等の異常なきこと No evidence of arc damage etc. ΔR/R ≤ ± (2%+0.05Ω)	定格電力×10倍 5秒間負荷 1000% of rated power load for 5 seconds
絶縁抵抗 Insulation resistance	20MΩ min.	DC500V
耐電圧 Dielectric withstanding voltage	機械的損傷及び絶縁破壊なきこと No evidence of mechanical damage or insulation breakdown ΔR/R ≤ ± (0.1%+0.05Ω)	AC800V for one minute
端子強度 Terminal strength	機械的損傷なきこと No evidence of mechanical damage	引張り(Pull) 44N for 30 seconds
抵抗体強度 Resistor strength	機械的損傷なきこと No evidence of mechanical damage	2W~10W 98N for 10 seconds
耐振性 (KNYS 5~10Wは除く) Vibration (Except KNY 5~10W)	機械的損傷なきこと No evidence of mechanical damage	取付け：基板実装状態 Installation: PCB mounted X and Y each direction for 2 hours
半田耐熱 Soldering heat	機械的損傷及び外観劣化なきこと No evidence of mechanical damage and appearance deterioration ΔR/R ≤ ± (1%+0.05Ω)	350°C for 3 seconds
半田付け性 Solderability	75%以上新しい半田で覆われること 75% coverage min. with new solder	250°C for 3 seconds

■耐候的特性 Environmental characteristics

特性 Characteristics	規格値 Standards	試験方法 Test methods
耐熱性 Heat resistance	標印、絶縁被覆に著しい損傷なきこと No deterioration of protective coatings or markings	350±5°C for 2 hours
熱衝撃 Thermal shock	機械的損傷なきこと No evidence of mechanical damage ΔR/R ≤ ± (2%+0.05Ω)	定格負荷30分間 → -40°C 15分間 Power rating load for 30 minutes → -40°C for 15 minutes
耐湿性 (定常状態) Humidity (Steady state)	標印、絶縁被覆に異常なきこと No deterioration of protective coatings or markings ΔR/R ≤ ± (3%+0.05Ω)	成極DC100V 40°C 95%RH for 500 hours
耐久性 (耐湿負荷) Durability (Moisture resistance)	標印、絶縁被覆に異常なきこと No deterioration of protective coatings or markings ΔR/R ≤ ± (3%+0.05Ω)	10%負荷 10% of rated power load 90 minutes ON and 30 minutes OFF 40°C 95%RH for 1000 hours
耐久性 (定格負荷) Durability (Nominal load)	標印、絶縁被覆に異常なきこと No deterioration of protective coatings or markings ΔR/R ≤ ± (5%+0.05Ω)	100%負荷 100% of rated power load 90 minutes ON and 30 minutes OFF 70°C for 1000 hours
難燃性 (過負荷) Flame resistance (Over load)	燃焼しないこと No evidence of flaming or arcing	定格電力の1~15倍 100~1500% of rated power load

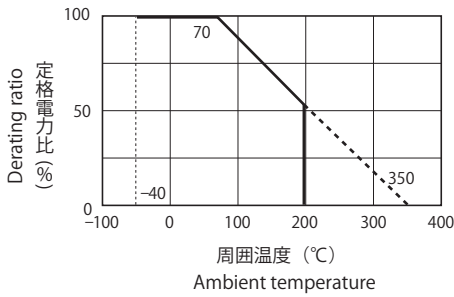
■規格 Standards

●形状・寸法 Configuration (mm)

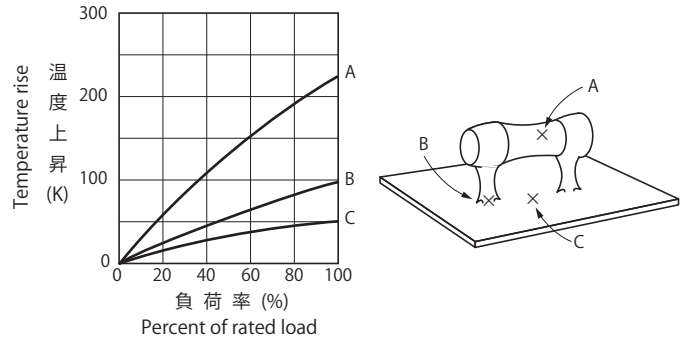


形状 Type	定格電力 (W) Power Rating	寸法 Dimensions (mm)						抵抗値範囲 (Ω) Resistance Range
		φD	L	P	B	C	H	
KNYS 2W	2	5	15	7.5	—	3.2	15.0	0.1~150
	3W	3	7	20	12.5	—	4.5	0.22~330
KNYL 5W	5	9	25	15.0	5.5	—	21.5	0.33~560
	7W	7	9	40	30.0	5.5	—	21.5
KNYS 5W	5	9	25	15.0	—	6.5	21.5	0.33~560
	7W	7	9	40	30.0	—	6.5	21.5
10W	10	9	53	42.5	—	6.5	21.5	1.0~1.8k

●定格電力軽減曲線 Power Derating Curve



●表面温度上昇 Surface Temperature Rise



■標準抵抗値

Standard resistance values JIS-E24 series

■抵抗値許容差

Resistance tolerance

$R \geq 1\Omega \dots \pm 5\%$  (J)

$R < 1\Omega \dots \pm 10\%$  (K)

■受注生産品 Products by order

■品番コード Explanation of Part Number

KNYS 2W R56 K / RO

