

可変抵抗器 VARIABLE RESISTORS

巻線形可変抵抗器

Wire-Wound Variable Resistor

WP series

- 磁器製ボデータイプ
- Porcelain Body
- 特許登録済
- Patent registered
- RoHS対応品
- RoHS Complied



■ 電氣的、機械的特性 Electrical and mechanical characteristics

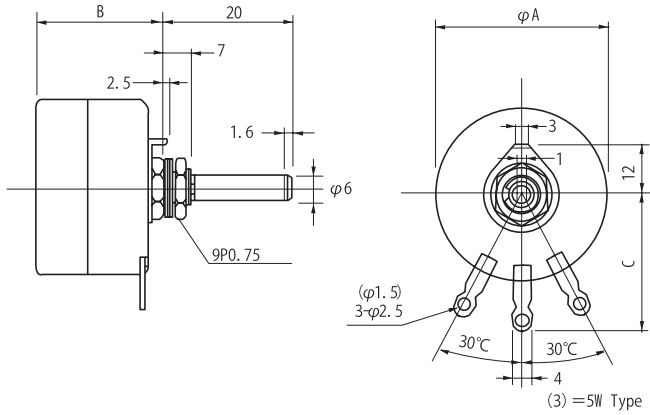
| 特性 Characteristics | 規格値 Standards | 試験方法 Test methods |
|---|---|---|
| 抵抗値と抵抗値許容差 Resistance and Resistance tolerance | 抵抗値許容差 Resistance tolerance ±15% | JIS-C-6445 6-1 |
| 抵抗変化特性 Resistance taper | B (Linear) | JIS-C-6445 6-2 |
| 残留抵抗値 Residual resistance | 1Ω max. or 0.2% max. | JIS-C-6445 6-3 |
| 絶縁抵抗 Insulation resistance | 100MΩ min. | JIS-C-6445 6-4 DC 500V |
| 耐電圧 Dielectric withstanding voltage | 機械的損傷及び絶縁破壊なきこと no evidence of mechanical damage or insulation breakdown | JIS-C-6445 6-5 AC1000V 1minute |
| 定格負荷 Power rating load | $\Delta R/R \leq \pm 2\%$ 表面温度上昇 WP 5W 10W --- 120°C max. (Temperature) WP15W ---- 140°C max. | JIS-C-6445 6-6 |
| 回転トルク Rotational torque | WP 5W --- 0.98 ~ 2.94N·cm WP10W --- 0.98 ~ 3.92N·cm WP15W --- 0.98 ~ 4.9N·cm | JIS-C-6445 4-4 |
| ストッパー強度 Stopper strength | 機械的損傷なきこと no evidence of mechanical damage | JIS-C-6445 4-7 WP 5W ----- 58.8N·cm WP10W, WP15W --- 98N·cm |
| 機械的回転角 Mechanical angle | 300° ±5° | JIS-C-6445 4-3 |
| 電氣的回転角 Electrical angle | 280° ±5° | |

■ 耐候的特性 Environmental characteristics

| 特性 Characteristics | 規格値 Standards | 試験方法 Test methods |
|------------------------------|--|--|
| 回転寿命 Rotational load life | 絶縁被覆に著しい損傷なきこと no deterioration of protective coatings $\Delta R/R \leq 5\%$ | JIS-C-6445 6-11 1/2W load 10 turns/1minute 1000 cycles |

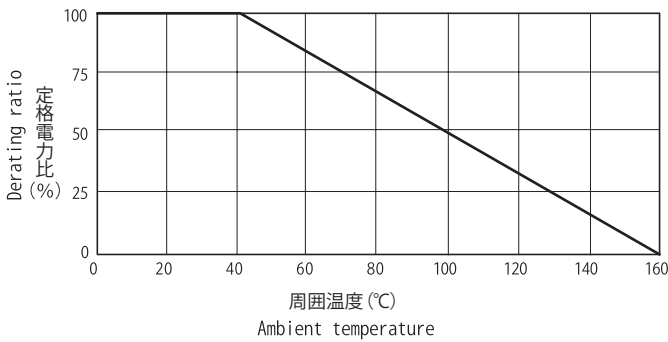
■規格 Standards

●形状・寸法 Configuration (mm)

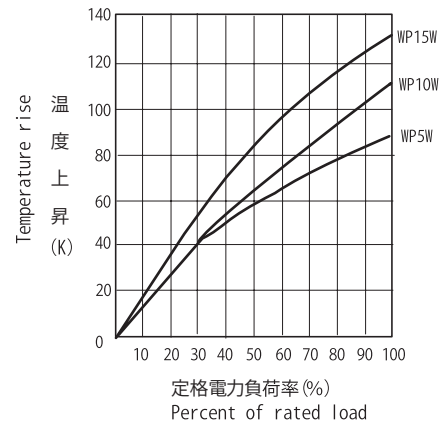


| 形状 Type | 定格電力 (W) Power Rating | 寸法 Dimensions (mm) | | | 抵抗値範囲(Ω) Resistance Range | 重量(g) Weight |
|------------|--------------------------|--------------------|----|----|------------------------------|-----------------|
| | | A | B | C | | |
| WP 5W | 5 | 30 | 25 | 20 | 5~10k | 50 |
| WP 10W | 10 | 42 | 31 | 31 | 10~20k | 60 |
| WP 15W | 15 | 50 | 33 | 34 | 30~50k | 100 |

●定格電力軽減曲線 Power Derating Curve



●表面温度上昇 Temperature Rise



■標準抵抗値 (Ω)

Standard resistance values

()内 抵抗値コード Resistance code

| | | | | | | | |
|------------|-------|-------|-------|-------|-------|-------|-------------|
| WP 5W (Ω) | 100 | 200 | 500 | 1k | 2k | 5k | 10k |
| WP 10W (Ω) | 100 | 200 | 500 | 1k | 2k | 5k | 10k |
| WP 15W (Ω) | 100 | 200 | 500 | 1k | 2k | 5k | 10k 20k |
| (抵抗値コード) | (101) | (201) | (501) | (102) | (202) | (502) | (103) (203) |

■受注生産品 Products by Order

■品番コード Explanation of Part Number

軸長
 定格 標準 可能軸
 5W 2.0 1.5・2.5
 10W 2.0 1.5・2.5
 15W 2.0 1.5・2.5
 軸加工
 S=S溝

許容差
 標準品: ±1.5%
 特殊 (±1.0%=K)

WP 10W □ 20S 102 □ / RO

