

不燃性角形巻線固定抵抗器

Non Flammable Square Wire-Wound
Fixed Resistor

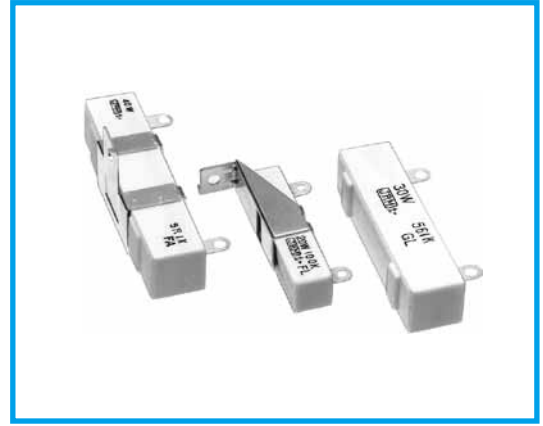
SQH series

■角端子タイプ

■ Horn Terminal type

■ RoHS 対応品

■ RoHS Complied



■電氣的、機械的特性 Electrical and mechanical characteristics

特性 Characteristics	規格値 Standards	試験方法 Test methods
抵抗値と抵抗値許容差 Resistance and Resistance tolerance	抵抗値許容差 Resistance tolerance 1Ω ≤ ±5% (J) 1Ω > ±10% (K)	
抵抗温度特性 Temperature coefficient	20Ω ≤ ±260ppm/°C max. 20Ω > ±400ppm/°C max.	
定格負荷 Power rating load	△R/R ≤ ± (1%+0.05Ω) 表面温度上昇 (temperature) 315°C max.	
短時間過負荷 Short-time overload	アーク焼損等の異常なきこと no evidence of arc damage etc. △R/R ≤ ± (2%+0.05Ω)	10倍 5秒間負荷 1000% rated power 5 seconds
絶縁抵抗 Insulation resistance	20MΩ min.	DC500V
耐電圧 Dielectric withstanding voltage	機械的損傷及び絶縁破壊なきこと no evidence of mechanical damage or insulation breakdown	AC1500V 1 minute
端子強度 Terminal strength	機械的損傷なきこと no evidence of mechanical damage	引張り強さ(Pull Test) 44N 30 seconds
抵抗体強度 Resistor strength	機械的損傷なきこと no evidence of mechanical damage	5W~40W 98N 10 seconds
耐振性 Vibration	機械的損傷なきこと no evidence of mechanical damage	1.5mm 10~55Hz / 1 minute X, Y, Z 2 hours
半田付け性 Solderability	75%以上新しい半田で覆われること 75% coverage min. with new solder	250°C 3 seconds

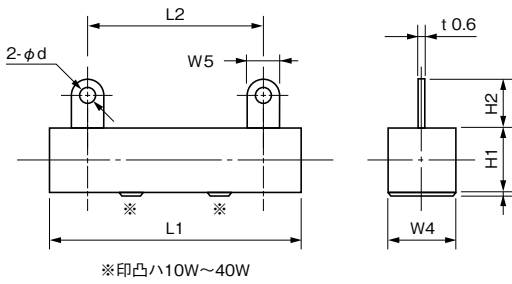
■耐候的特性 Environmental characteristics

特性 Characteristics	規格値 Standards	試験方法 Test methods
耐熱性 Heat resistance	標印、絶縁被覆に著しい損傷なきこと no deterioration of protective coatings or markings	315°C 2 hours
熱衝撃 Thermal shock	機械的損傷なきこと no evidence of mechanical damage △R/R ≤ ± (2%+0.05Ω)	定格負荷30分間 → -30°C 15分間 power rating load 30 minutes → -30°C 15 minutes
耐湿性(定常状態) Humidity (Steady state)	標印、絶縁被覆に異常なきこと no deterioration of protective coatings or markings △R/R ≤ ± (3%+0.05Ω) 絶縁抵抗 (Insulation resistance) 2.5MΩ min	成極DC100V 40°C 95%RH 500 hours
耐久性(耐湿負荷) Durability (Moisture resistance)	標印、絶縁被覆に異常なきこと no deterioration of protective coatings or markings △R/R ≤ ± (3%+0.05Ω)	10%負荷 rated power load 90 minutes ON 30 minutes OFF 40°C 95%RH 500 hours
耐久性(定格負荷) Durability (Nominal load)	標印、絶縁被覆に異常なきこと no deterioration of protective coatings or markings △R/R ≤ ± (5%+0.05Ω)	100%負荷 rated power load 90 minutes ON 30 minutes OFF 500 hours
難燃性(過負荷) Flame resistance (Over load)	燃焼しないこと no evidence of flaming or arcing	定格電力の1~6倍 100~600% rated power load

■規格 Standards

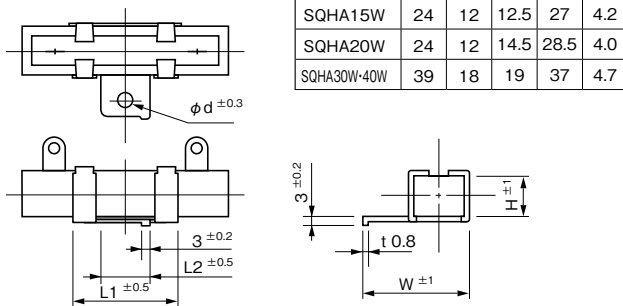
●形状・寸法 Configuration (mm)

●SQH type

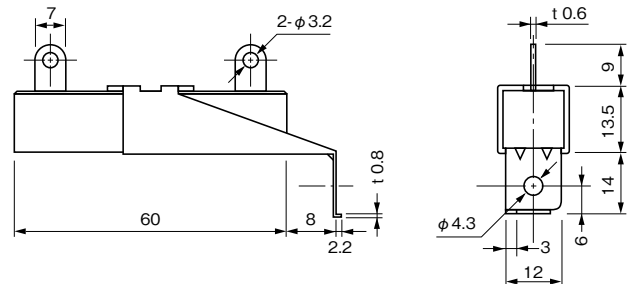


形状 Type	定格電力 (W) Power Rating	寸法 Dimensions (mm)							抵抗値範囲 (Ω) Resistance Range
		L1	L2±2	H1	H2	W4	W5±1	φd	
SQH 5W	5	22.0	11.0	9.0	7.0	10.0	5.0	2.2	0.1~390
7W	7	35.0	23.0	9.0	7.0	10.0	5.0	2.2	0.27~1.2k
10W	10	48.0	35.0	9.0	7.0	10.0	5.0	2.2	0.47~2k
15W	15	48.0	33.0	11.5	8.0	12.5	6.0	3.2	0.39~1.8k
20W	20	60.0	44.0	13.5	9.0	14.5	7.0	3.2	1~3.3k
30W	30	75.0	52.0	19.0	12.0	19.0	7.0	4.3	1~5.6k
40W	40	90.0	67.0	19.0	12.0	19.0	7.0	4.3	1.2~6.8k

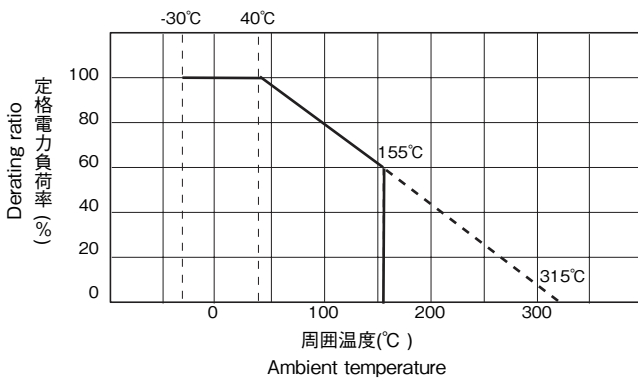
●SQHA type



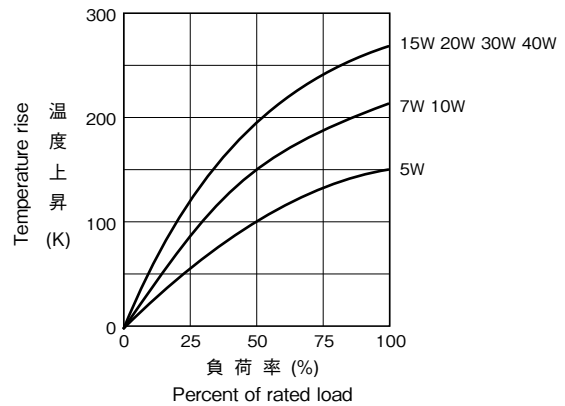
●SQHB 20W type



●定格電力軽減曲線 Power Derating Curve



●表面温度上昇 Temperature Rise



■標準抵抗値 (Ω)

Standard resistance values JIS-E24 series

抵抗値許容差

Resistance tolerance

$R \geq 1\Omega \dots \pm 5\%$ (J)

$R < 1\Omega \dots \pm 10\%$ (K)

■受注生産品 Products by order

■品番コード Explanation of Part Number

S Q H A 2 0 W 1 0 1 K / R O

