

高電圧用固定抵抗器
High Voltage Power Resistor

HM series

- 高電圧・高抵抗値タイプ ■High Voltage, High Resistance Value type
- 無誘導タイプ ■Non-inductive type



■電氣的、機械的特性 Electrical and mechanical characteristics

特性 Characteristics	規格値 Standards	試験方法 Test methods
抵抗値と抵抗値許容差 Resistance and Resistance tolerance	公称抵抗値 別表による Resistance nominal 抵抗値許容差 ±5% (J), ±10% (K) Resistance tolerance	
抵抗温度特性 Temperature coefficient	±300ppm / °C max.	
定格負荷 Power rating load	△R/R ≤ ± (1% + 0.05 Ω) 表面温度上昇 (temperature) 105°C max.	
短時間過負荷 Short-time overload	アーク焼損等の異常なきこと no evidence of arc damage etc. △R/R ≤ ± (1% + 0.05 Ω)	定格電力×5倍 5秒間負荷 500% rated power 5 seconds
端子強度 Terminal strength	機械的損傷なきこと no evidence of mechanical damage	引張り強さ (Pull Test) 24.5N 10 seconds (HM 1~5 W)
耐振性 Vibration	機械的損傷なきこと no evidence of mechanical damage △R/R ≤ ± (1% + 0.05 Ω)	
半田耐熱 Soldering heat	機械的損傷、外観劣化なきこと no evidence of mechanical damage △R/R ≤ ± (1% + 0.05 Ω)	260°C 5 seconds
半田付け性 Solderability	95%以上新しい半田で覆われること over 95% covered with new solder.	235°C 5 seconds

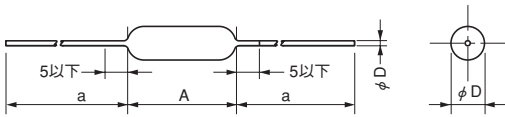
■耐候的特性 Environmental characteristics

特性 Characteristics	規格値 Standards	試験方法 Test methods
耐熱性 Heat resistance	標印、絶縁被覆に著しい損傷なきこと no deterioration of insulation coating and markings	155 °C 2 hours
温度サイクル Temperature cycle	機械的損傷なきこと no evidence of mechanical damage △R/R ≤ ± (1% + 0.05 Ω)	-55 / 70°C 5 cycles
耐久性 (耐湿負荷) Durability (Moisture resistance)	標印、絶縁被覆に異常なきこと no deterioration of insulation coatings and markings △R/R ≤ ± (5% + 0.05 Ω)	100%負荷 (100% rated power load) 90 minutes ON 30 minutes OFF 40°C 95%RH 1000 hours
耐久性 (定格負荷) Durability (Nominal load)	標印、絶縁被覆に異常なきこと no deterioration of insulation coatings and markings △R/R ≤ ± (2% + 0.05 Ω)	100%負荷 (100% rated power load) 90 minutes ON 30 minutes OFF 70°C 1000 hours

■規格 Standards

●形状・寸法 Configuration (mm)

1~5W type

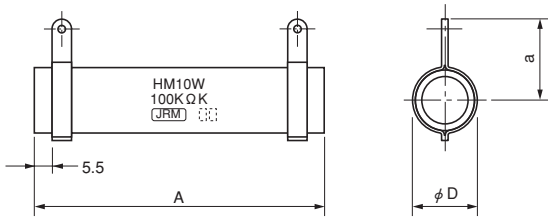


形状 Type	定格電力(W) Power Rating	寸法 Dimensions (mm)				抵抗値範囲(Ω) Resistance Range	最高使用電圧(V) Maximum Operating Voltage
		φD	A	a	b		
HM 1W	1	5.0	16.0	38.0	0.8	100k~200M	5,000
HM 2W	2	8.0	25.0	38.0	0.8	100k~500M	8,000
HM 3W	3	8.0	40.0	38.0	0.8	100k~1000M	10,000
HM 5W	5	8.0	53.0	38.0	0.8	100k~2000M	15,000
HM 10W	10	20.0	90.0	22.0	—	100k~2000M	30,000
HM 20W	20	28.0	90.0	31.0	—	100k~2000M	30,000
HM 100W	100	37.0	340.0	—	—	100k~5000M	100,000

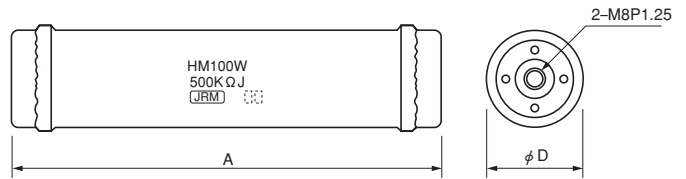
注) 最高使用電圧は定格電圧を超えないこと。

Note) Maximum operating voltage must not exceed the rated voltage.

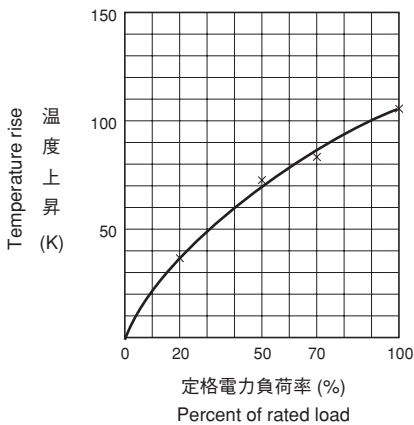
10W 20W type



100W type



●表面温度上昇 Temperature Rise



■受注生産品 Products by order

■品番コード Explanation of Part Number

